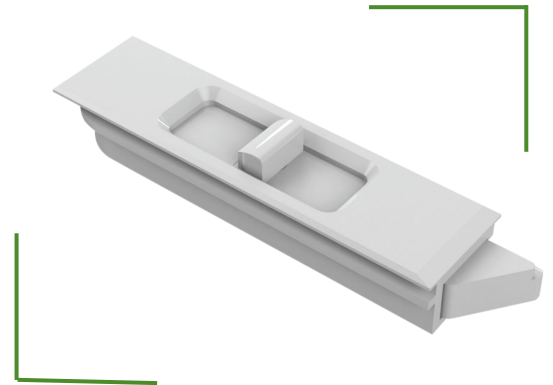


SightLine For Vinyl

Tilt Latches

Our Sightline tilt latches are designed to deliver a smooth quality feel, with easier and quieter operation. Made from a high performing nylon material to deliver a tough and durable latch with a corrosion resistant stainless-steel spring. Engineered for performance and developed for manufacturing.



AVAILABLE COLORS



Earth
Brown



Almond



White



Black



PRODUCT HIGHLIGHTS

- Recommended for: composite and vinyl
- Improves window aesthetics with its streamline, flush-to sash appearance
- Numerous plastic and metal actuators help to customize the look of your window
- Available in all the popular industry colors and finishes
- Continuous .090" rail that wraps around the latch housing to help prevent the risk of failure under structural load and eliminates the need for screw fastening
- Includes an aggressive stile snap mechanism that automatically engages deep into the window stile to keep the latch in place
- Fits a majority of window applications by offering multiple latch bolts and 2 different housing styles